

ENHANCED
CREATIVITY
THROUGH
ADVANCED
CONTROL

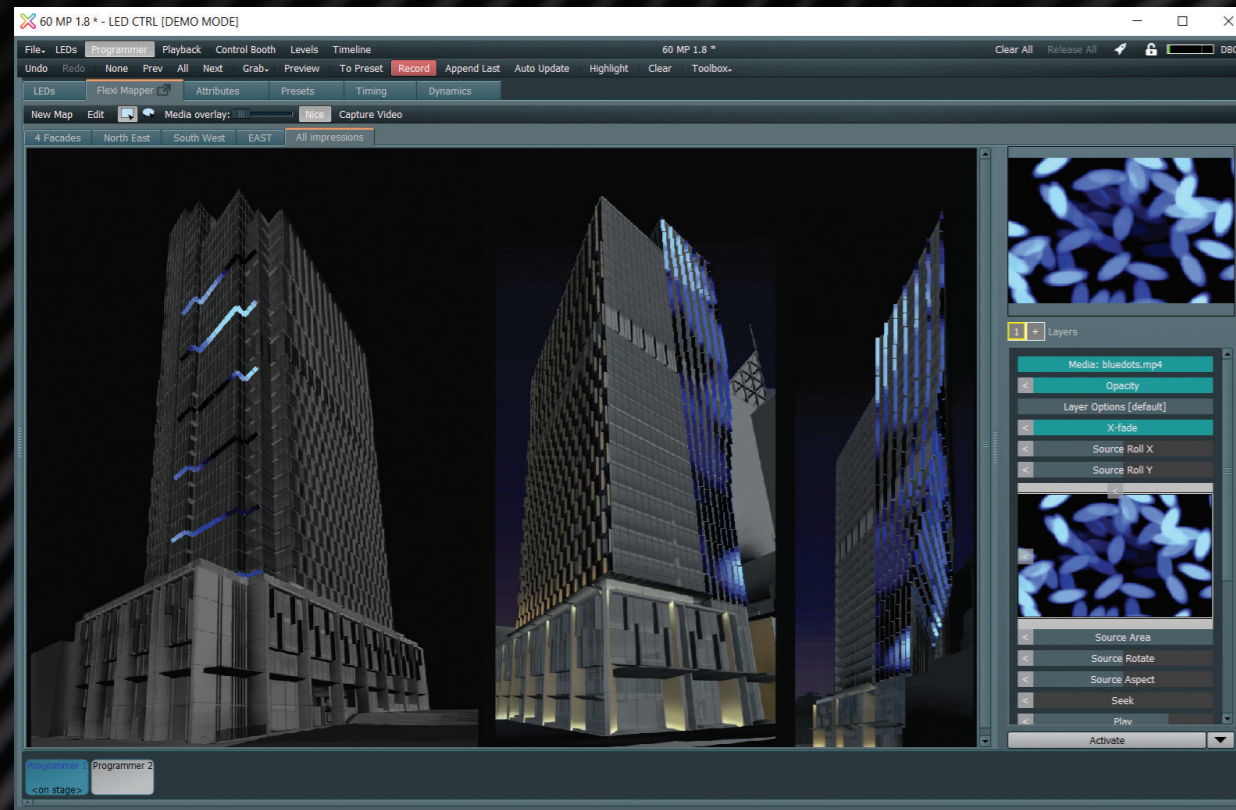
Welcome to LED CTRL, intuitively powerful LED control software, uniquely developed for controlling LED lighting.

Everyone at LED CTRL is a die hard fan of usability and reliability, be a part of the LED CTRL revolution and experience the joy of using the world's most intuitive LED Control software.

We believe in usability and reliability. Our industry proven Crystal engine, underpins an unrivalled user experience. Innovative original toolsets, carefully developed from the ground up, provide original and refreshing control experience. What you've been craving for has arrived.

Effortlessly pitch, deliver and create awe inspiring visual experiences.

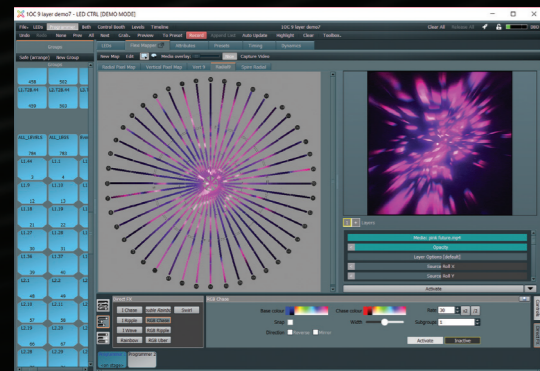




PITCH

COMMUNICATE LIGHTING CONCEPTS QUICKLY AND EFFECTIVELY FOR GREATER CUSTOMER ENGAGEMENT. SIMPLE 2D VIDEO ANIMATIONS OR FULL IMMERSIVE 3D VIRTUAL REALITY EXPERIENCES.

Connect with your client, import a photo or concept image, overlay pixels and demonstrate in real-time or with video export actual lighting animations. Great for sales presentations, stake-holder or regulatory approval.



DELIVER

POWERFUL INTUITIVE HARDWARE AND SOFTWARE DEVELOPED FOR EASE OF USE AND FLEXIBILITY FOR A WIDE RANGE OF LIGHTING PROJECTS.

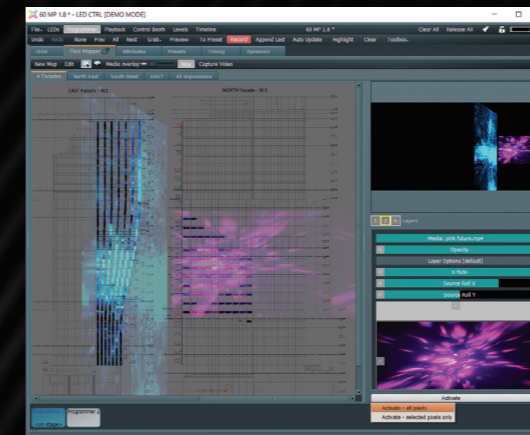
A range of tools to save technicians valuable time. CSV Patch importing, curved pixel maps, network detection, plug and play hardware and a range powerful configuration toolsets, and that's just the beginning...

CREATE

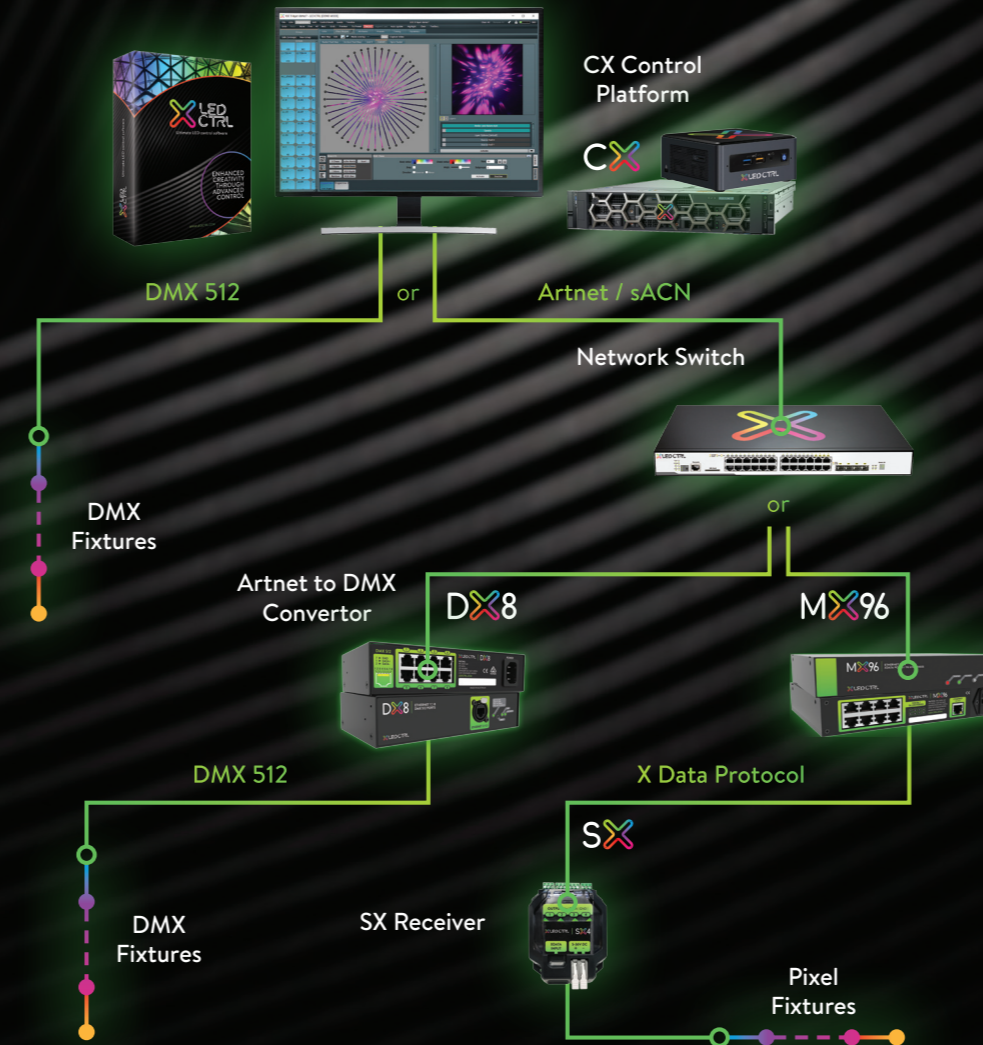
UNLOCK YOUR CREATIVITY, LET IT RUN FREE. INTUITIVE AND POWERFUL PROGRAMMING TOOLS ALLOW MULTIPLE WORKFLOWS TO CREATE STUNNING LIGHTING VISUAL EFFECTS.

Eliminating the boundaries between creative ideas and technical programming. A range of programming methods and workflows make it intuitively easy.

1. **Direct Control** - Precisely control your pixels.
2. **Direct FX** - quickly and easily generate a range of lighting effects or create your own using our in-built FX Engine.
3. **Media Generator** - Easily create and manipulate animated media without external programs.
4. **Media Mapping** - Map movies, gifs and images to your pixel map.



LED CTRL SYSTEM DIAGRAM



VIRTUAL REALITY

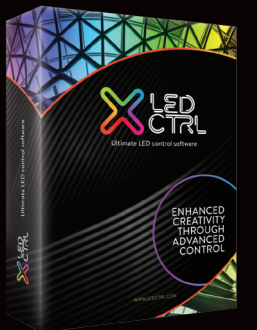


Engage and convert customers with our Virtual Reality lighting experience. LED CTRL powerfully delivers lighting concepts, animation effects and options in an immersive 3D world. Contact us to help scope your reality.

SOFTWARE

FEATURES:

- Bring your architectural LED and building signage projects to life with dynamic, highly controllable lighting effects.
- Create striking and accurate results with imported media or direct pixel control without having to create custom content.
- Fast and flexible pixel mapping including curves and freehand layouts, ideal for linear lettering and abstract designs.
- Powerful in-tool visualisation for concepts and offsite programming.
- Easy to use graphical interface providing shallow learning curve and fast results.
- Timeline based programming and playback for synchronised playback including audio waveform visualisation.
- Architectural controls for time of day triggers.
- Mac, Linux and Windows platform support.



HARDWARE



Pre-configured computing platform, delivering the ultimate performance, reliability and scalability for any sized lighting project.



Powerfully adaptable hardware specifically designed for controlling LED pixel products. A whopping 96 universes from a single MX96 converts sACN or Artnet to XData across 8 ports. Xdata is a reliable protocol for transmission up to 300m.



SX receivers handle cable and power management, as well as conversion to pixel ready protocols.



8 Port Ethernet to DMX converter.