



# DX8

## 8-PORT, MULTI-PROTOCOL ETHERNET-TO-DMX GATEWAY



## INTRODUCING DX8, THE WORLD'S MOST POWERFUL 8-PORT ETHERNET TO DMX512 CONVERTER.

With the ability and speed to handle large amounts of DMX over Ethernet data, it is ideal for any pixel-mapped LED project or traditional rigs.

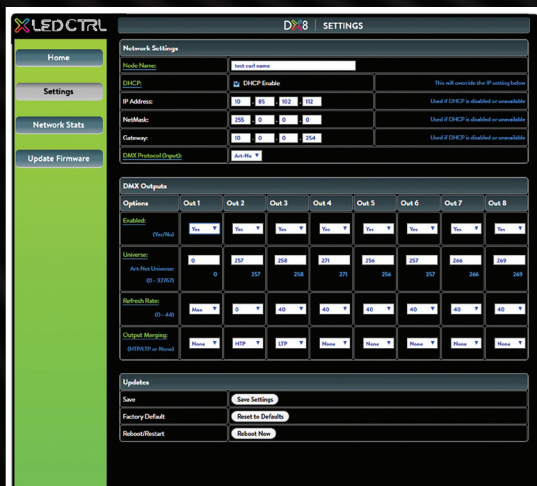
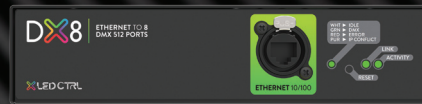
Through its eight RJ45 DMX ports, DX8 supports multiple protocols and can be configured using a new, easy-to-use interface on any web browser thanks to the built-in web-server.



# DX8 COMPACT YET POWERFUL!

## FEATURES

- Web-based configuration.
- Supports Art-Net and sACN.
- Supports either LTP or HTP Merging (up to 2 sources).
- Supports DMX512/1990.
- Refresh rate is configurable for each DMX output.
- Each DMX output can be assigned up to one Ethernet Universe.
- Choose Static or Dynamic (DHCP) IP configuration (DHCP by default).



## HARDWARE

- 8 DMX (RJ45) data output ports.
- IEC power connector.
- 10/100 Ethercon RJ45 Ethernet.
- Fits into a robust metal 9.5 inch single unit rack.
- Two units can be mounted side by side to form a standard 19-inch rack.
- In-built power supply (input 90 to 260V AC).
- Multi-colour RGB status LED.

## DIMENSIONS

L 191mm/7.53" W 105mm/4.14" H 44.5mm/1.75"

## EASY CABLING

Easier and lower cabling costs using standard RJ45 outputs. Although XLR connectors are widely used in the entertainment world, when your project isn't traveling the world on a regular basis, RJ45 connectors offer the best price / performance ratio. Using standard shielded CAT5 cable to connect your whole system also helps keep the cost per port down. We use the standard ANSI E1.27-2 specified RJ45 pinout to make sure most equipment connections will be simple.

